



## Specifications

- At least 70 microns electrostatically powder-coated die-cast aluminum body
- At least 70 microns electrostatically powder-coated DKP / galvanized brackets
- 4 mm thick tempered glass
- Mid Power LED with high efficiency factor, L90B10 > 80,000 hours
- PMMA optical lens options suitable for all facade lighting applications
- Constant current output, high-efficiency driver
- One-piece silicone gasket resistant to high and low temperatures
- Corrosion-resistant connection materials
- Optional 10kV lightning protector resistant to power line surges

Nominal Power	120 W
Nominal Voltage	220-240 VAC - 50-60 HZ
Luminous Flux	B 16.200 lm*
Efficiency	135 lm/W
Power Factor	≥0,95
IEC Protection Class	Class I
Surge Protection	6-10 Kv
Dimensions	400x380x103 mm
Weight	4,9 -5,6 kg

\*The given lumen value is valid for 4000K-70CRI. Please contact us for other options.

## Options

Light Color and CRI Options	3000 K - CRI 70	<b>37</b>
	3000 K - CRI 80	<b>38</b>
	4000 K - CRI 70	<b>47</b>
	4000 K - CRI 80	<b>48</b>
	6500 K - CRI 70	<b>67</b>
	6500 K - CRI 80	<b>68</b>

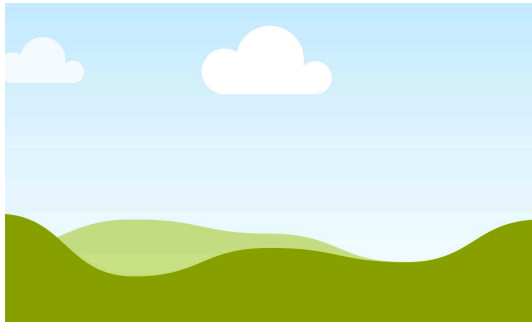
System Options	On-Off Std	<b>01</b>
----------------	------------	-----------

Road Optic Options	10 Degree	<b>04</b>
	25 Degree	<b>05</b>
	60 Degree	<b>07</b>
	90 Degree	<b>08</b>
	Simetric Oval Beam	<b>09</b>

Body Colour Options	RAL7016MAT	<b>716</b>
	RAL9005MAT	<b>905</b>
	RAL9016MAT	<b>916</b>

## Dimensions

L1	L2	W	H1	H2
366mm	408mm	432mm	65mm	184mm

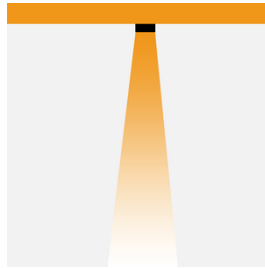


## Order Code

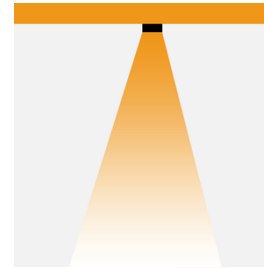
AR	Material Group
LN6	Product Model
C	Lumen Segment
120	Product Power (W)
47	Color and CRI Options
07	Optical Options
01	System Option
716	Body Color Option

AR - LN6 - C - 120 - 47 - 07 - 01 - 716

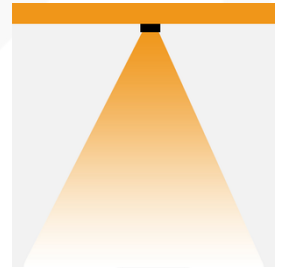
10 Degree



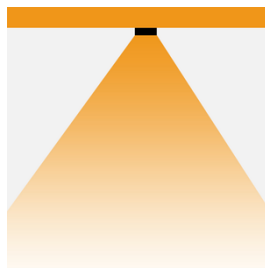
25 Degree



60 Degree



90 Degree



Simetric Oval Beam

