



## ELOP 25

### Specifications

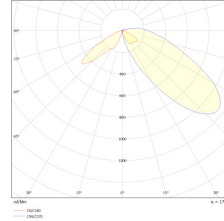
Nominal Power (W)	25 W
Luminous Flux (lm)	2875 - 3375 lumen
Efficacy (lm/W)	115 - 135 lm/W
Nominal Voltage (V)	220 - 240 V / 50 - 60 Hz
Power Factor	> 0.95
IEC Protection Class	Class I
Ingress Protection	IP 65
Impact Protection	IK 08
Colour Rendering Index (CRI)	> 70
Colour Temperature (K)	2700 - 6500 K
Operating Temperature (Ta)	Outdoor -20 °C / +50 °C
Diffuser	PMMA
Optic	PMMA
Surge Protection (kV)	6 - 10 kV
Control Protocols	1-10V DALI ZigBee DMX
Housing	Aluminum - Steel
Dimensions and Weight	250 mm - 2000 mm
Colour Options	All RAL colours



### Description

LED Decorative Lighting Pole

*Photometric Distribution:*



*Complied Standards:*

LM 79-08, LM 80

EN 60598-1:2015+A1:2018

EN 60598-2-13:2006+A1:2012+A2:2016

*LED Lifetime:*

120,000 hours L80

### Applications

- Landscape and Gardens
- Urban Areas
- Streets and Roads
- Parks and Car Lots
- Residential Areas



#### CORPORATE

Company  
Quality and R&D  
Certificates  
News  
Career

#### PRODUCTS

Road and Street Luminaires  
Floodlights and Area Luminaires  
Industrial and Tunnel Luminaires  
Indoor and Office Luminaires  
Poles and Bollards  
İMAJ® Ballasts and Ignitors  
GRITCON® Smart Control  
GRITSOL® Solar Systems

#### CONTACT US

E-Mail : sales@grupimaj.com  
Phone : +90 212 689 93 08-09-10 (pbx)  
Fax : +90 212 689 93 11  
GSM : +90 507 699 53 32  
Address : Kavaklı district, Deniz Aktaş street, No: 6 |  
345520 Beylikdüzü / İstanbul / Turkey

