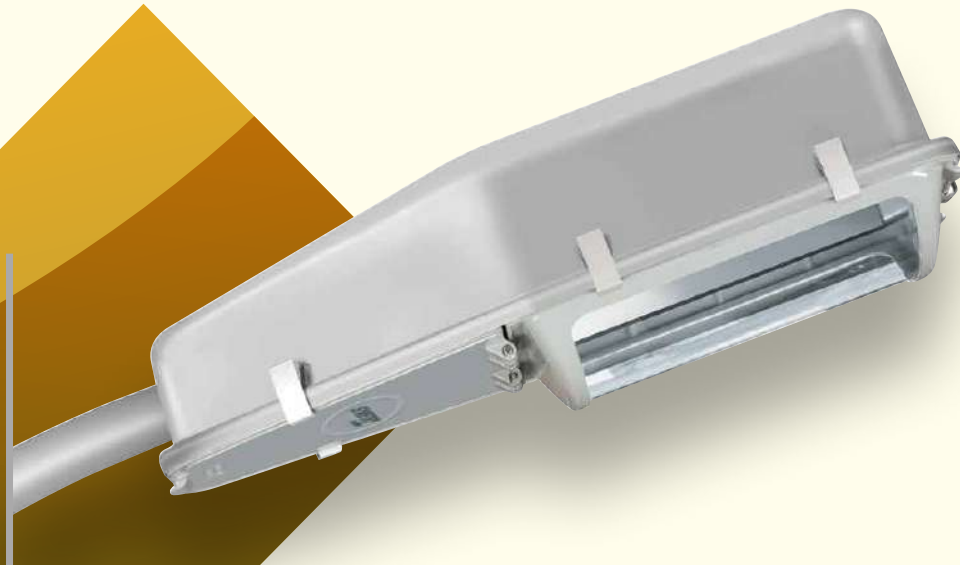


STREET LIGHTING

LUMINAIRE

AS
SERIES



APPLICATIONS

- Highways
- Street and Roads
- Industrial Fields
- Residential Areas
- Parks
- Perimeter and Security Lighting
- Cross Roads
- Car Parks

FEATURES

- Ergonomic Body
- Safely Open Diffuser and Bowl
- Open from Bottom
- Flat Reflector
- Suitable for Energy Saving Lamps
- Tool Free Opening System





Power W	Lamp Type	Current A	Luminaire Lamp Type	Figure	a mm	b mm	c mm	Lamp Holder Type	Pole Mount Consale	Weight kg	Capacitor mf	IP	Quality Certificates
220V - 230V, 50Hz													
			AS E-40	1	690	340	205	E-40	φ42- φ60	5,800		43	CE
210	SV	2,15	AS 210	1	690	340	205	E-40	φ42- φ60	8,000	20	43	CE
250	HG	2,15	AS 250	1	690	340	205	E-40	φ42- φ60	8,000	20	43	CE
250	SV	3,00	AS 250	1	690	340	205	E-40	φ42- φ60	8,500	32	43	CE
400	HG	3,15	AS 400	1	690	340	205	E-40	φ42- φ60	8,500	32	43	CE
400	MH	3,50	AS 400	1	690	340	205	E-40	φ42- φ60	8,700	35	43	CE
400	SV	4,60	AS 400	1	690	340	205	E-40	φ42- φ60	9,500	45	43	CE

Seal Type : Resistant To Heat Silicon
 Diffuser : Tempered Flat Glass
 Power Factor : 0,95 - 1
 Body Type : Aluminium Pressed Body
 Box Dimension : 710mmx345mmx210mm

LIGHT DISTRUBUTION CURVES

